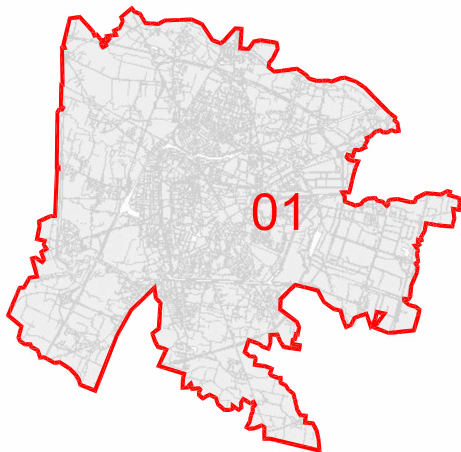



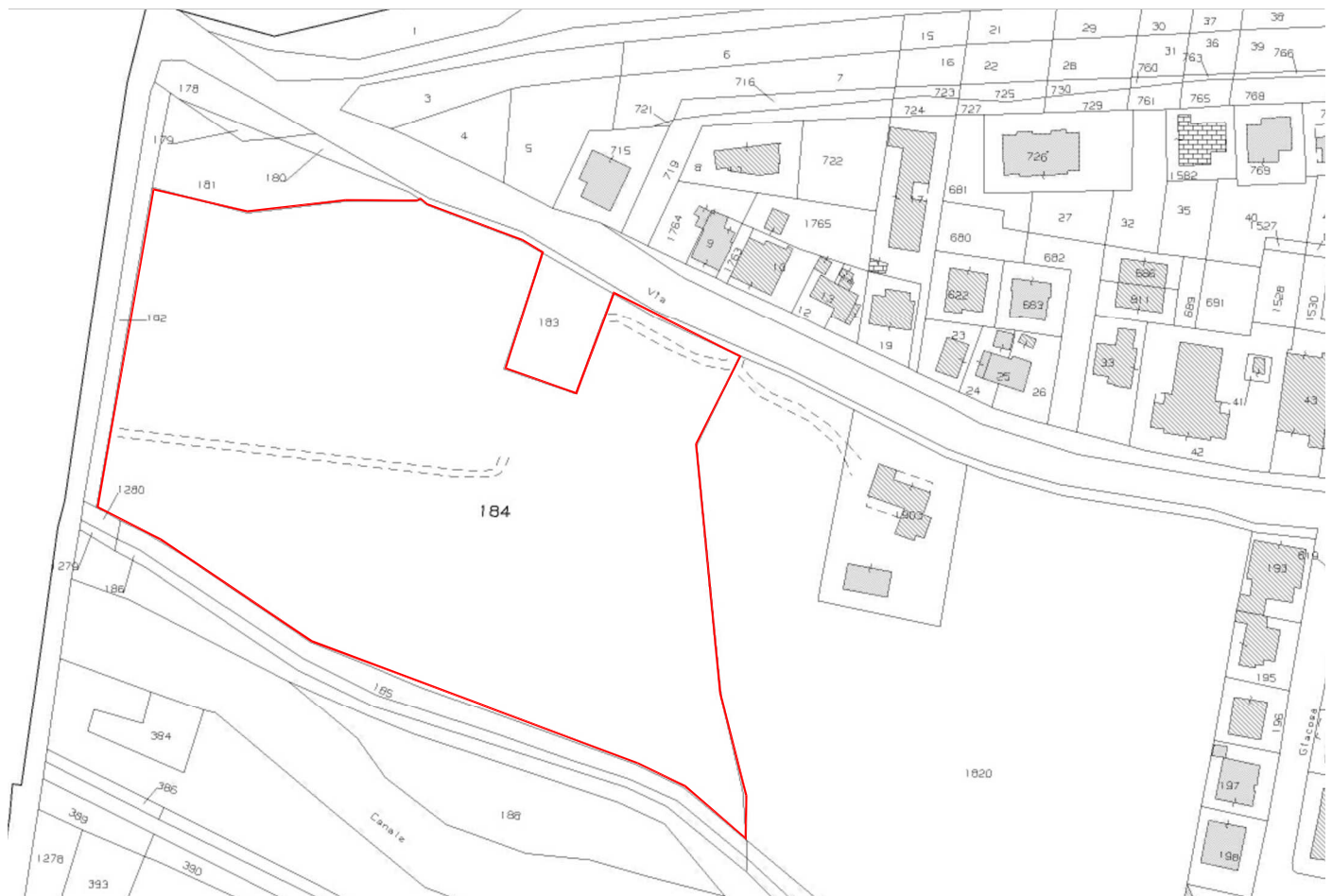


Area 01 - Area verde via Boccaccio



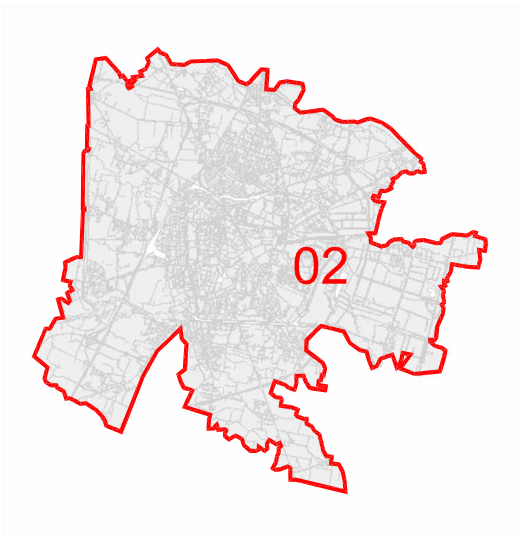
-  Localizzazione apiario
-  Accessi alle aree
-  Aree individuate sul Catasto Terreni




Ortofoto sc. 1:2000



Estratto di Mappa sc. 1:1000 Fg 108 part. 184

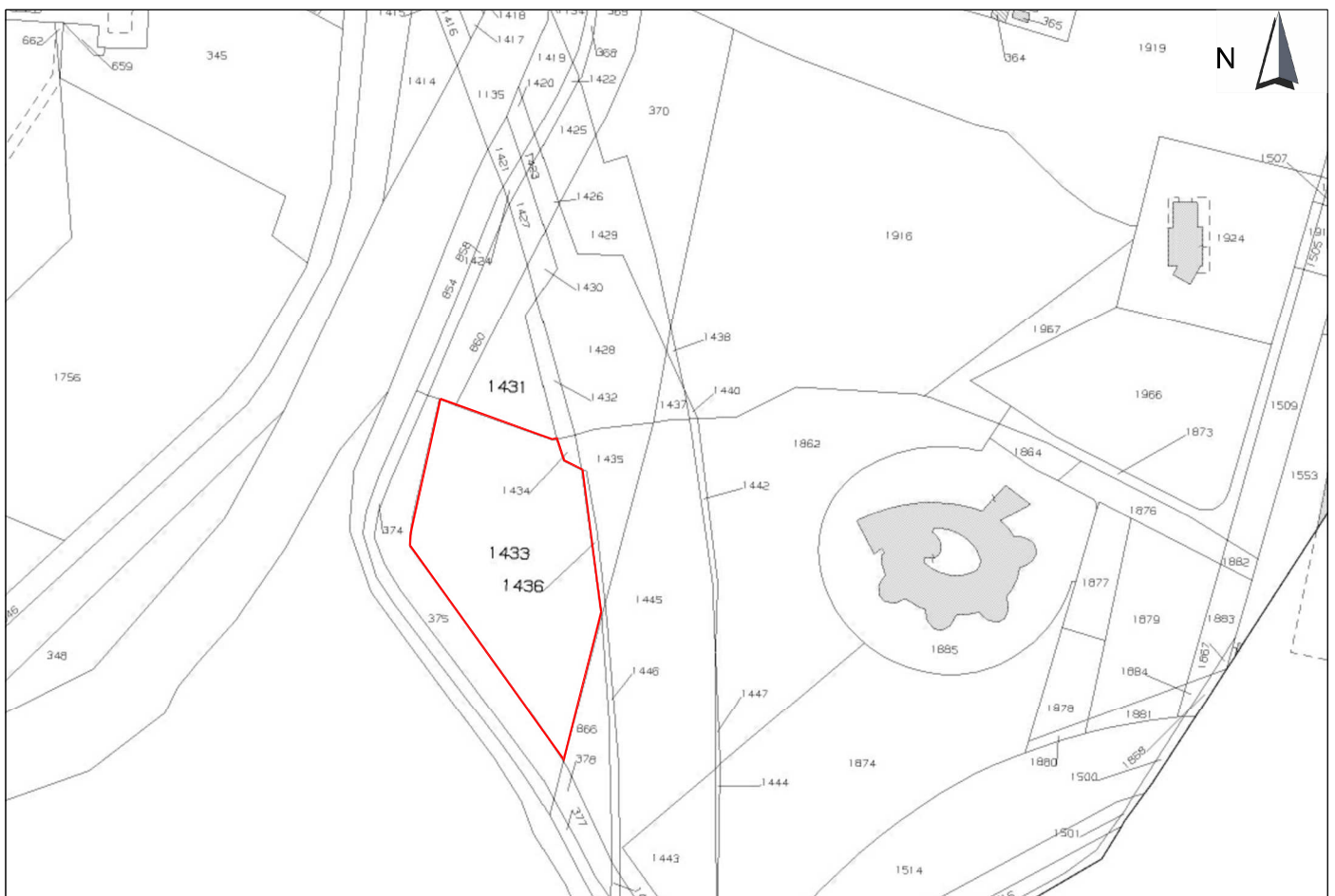
Area 02 - Parco Roncajette - via Sant'Orsola Vecchia



-  Localizzazione apiario
-  Accessi alle aree
-  Aree individuate sul Catasto Terreni

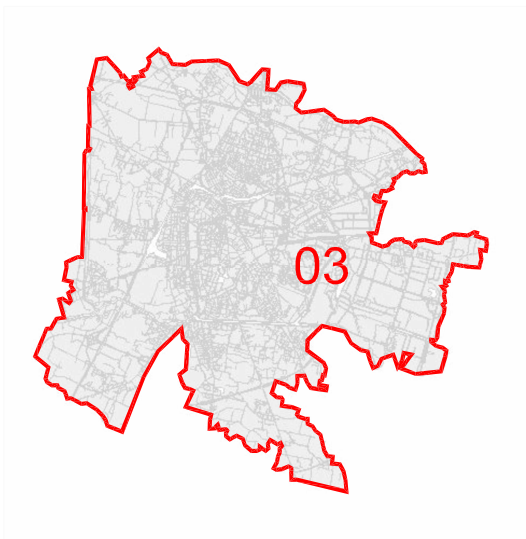





Ortofoto sc. 1:2000



Estratto di Mappa sc. 1:1000 Fg 108 part. 1433

Area 03 - Bosco Mortise -



-  Localizzazione apiario
-  Accessi alle aree
-  Aree individuate sul Catasto Terreni

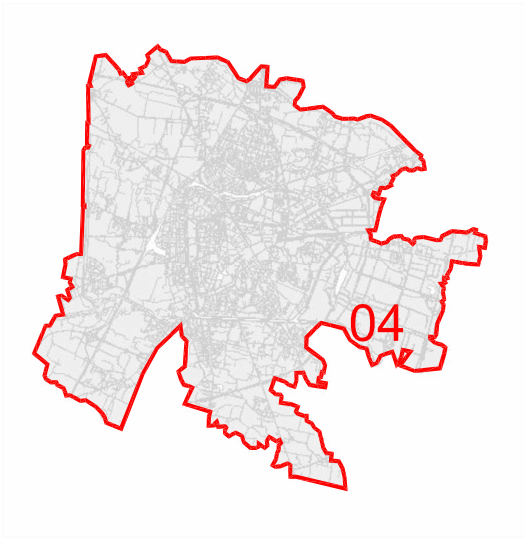





Ortofoto sc. 1:2000

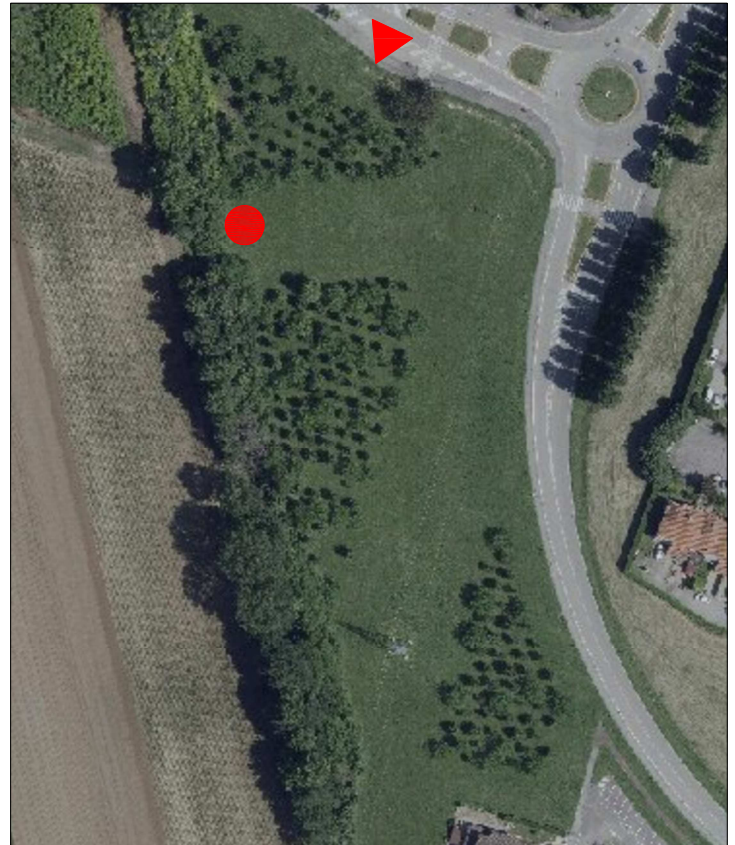


Estratto di Mappa sc. 1:1000 Fg 31 part. 40,839

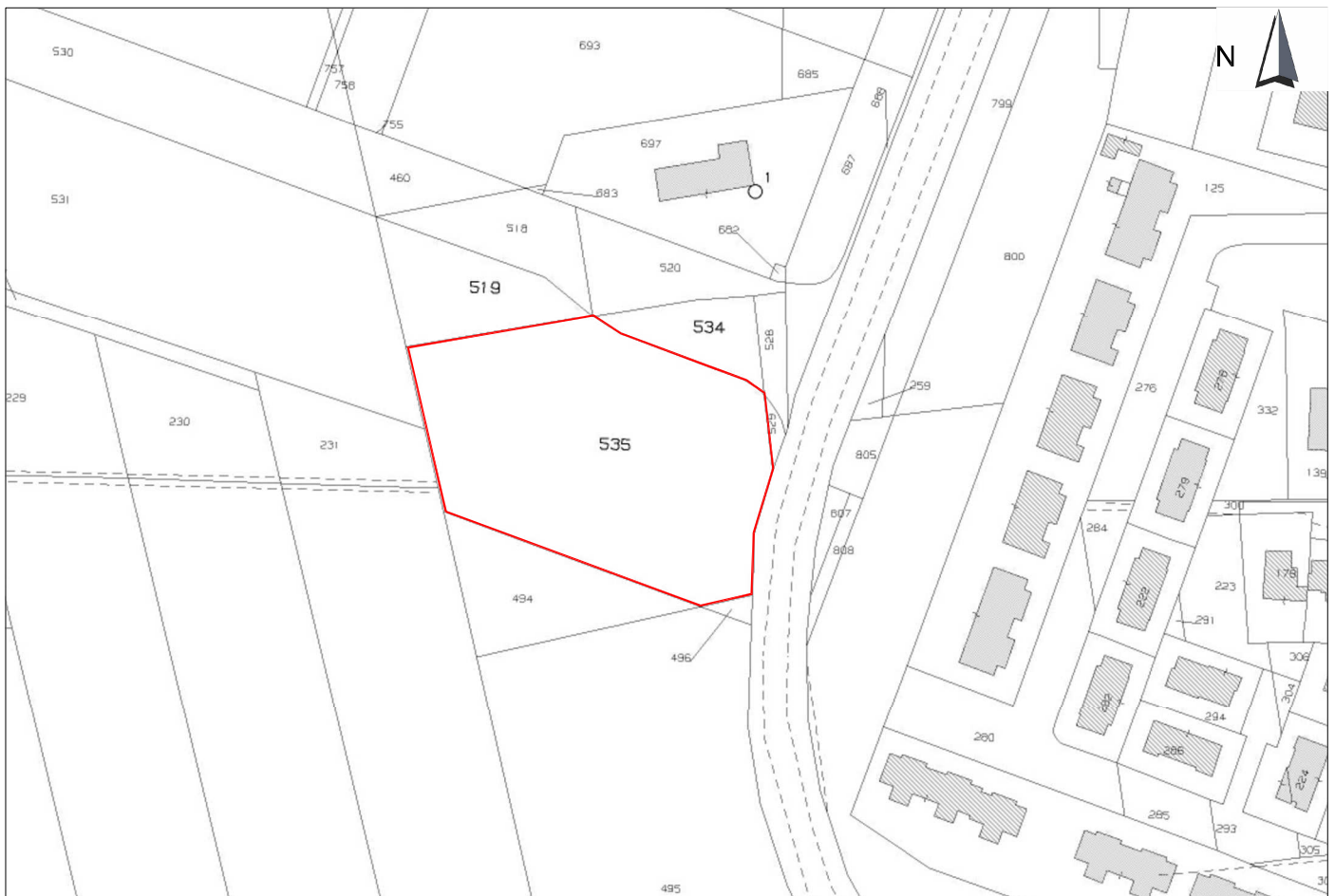
Area 04 - Area di via Messico



-  Localizzazione apiario
-  Accessi alle aree
-  Aree individuate sul Catasto Terreni

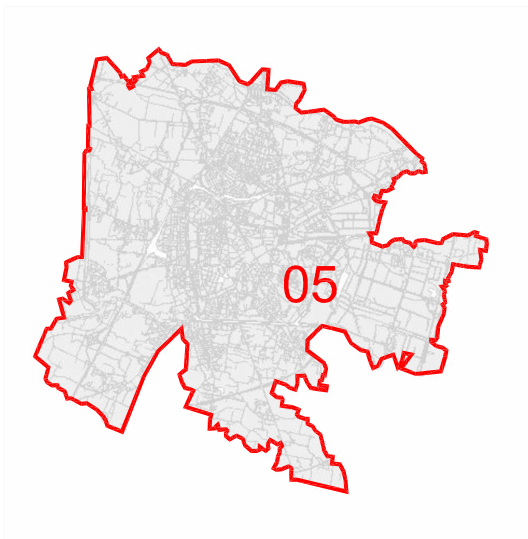


Ortofoto sc. 1:2000



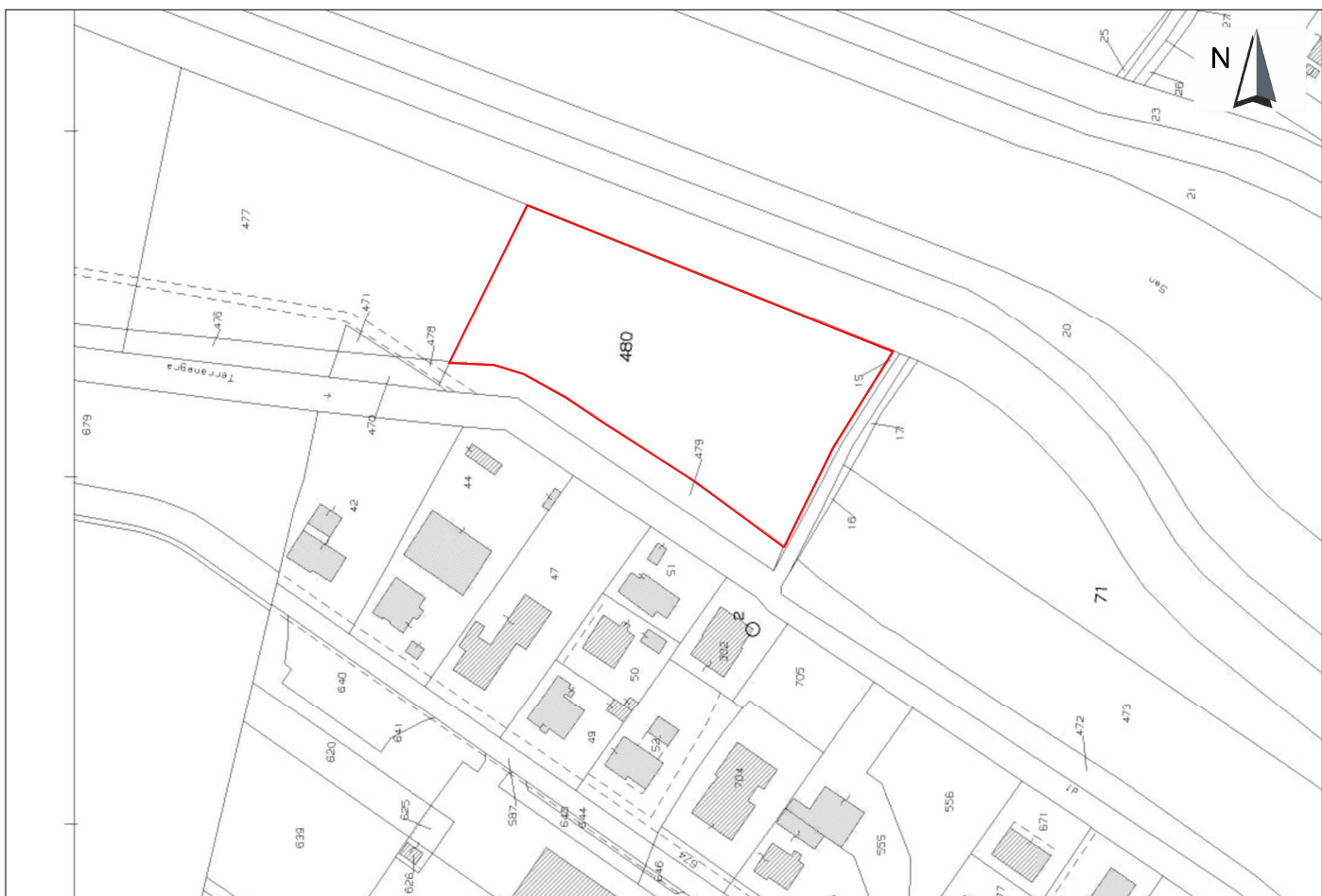
Estratto di Mappa sc. 1:1000 Fg 162 part. 535

Area 05 - Bacino di laminazione - via Gerardo



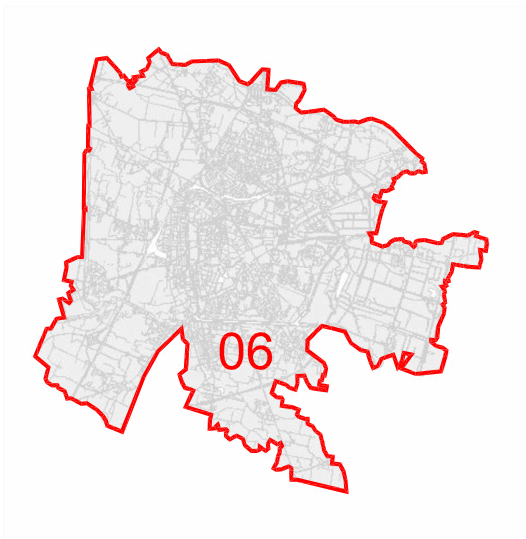
- Localizzazione apiario
- ▲ Accessi alle aree
- Aree individuate sul Catasto Terreni




Ortofoto sc. 1:2000



Estratto di Mappa sc. 1:1000 Fg 160 part. 480

Area 06 - Parco dei Salici



-  Localizzazione apiario
-  Accessi alle aree
-  Aree individuate sul Catasto Terreni

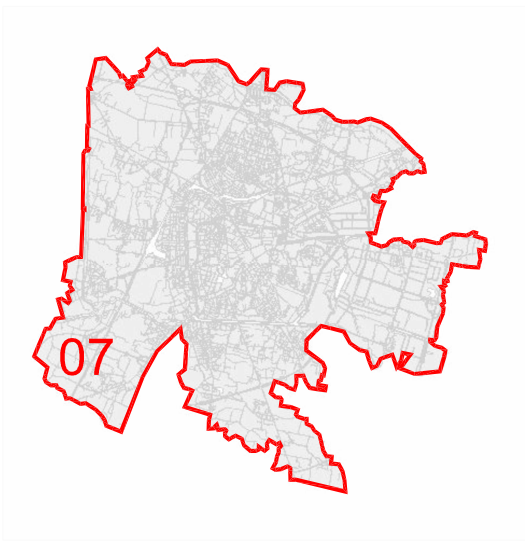





Ortofoto sc. 1:2000



Estratto di Mappa sc. 1:1000 Fg 181 part. 1327

Area 07 - Parco Mela Rossa



-  Localizzazione apiario
-  Accessi alle aree
-  Aree individuate sul Catasto Terreni

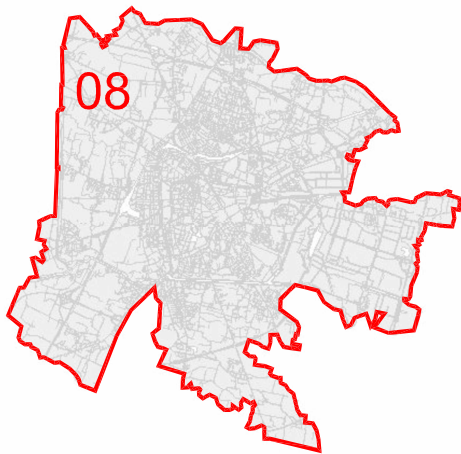


Ortofoto sc. 1:2000



Estratto di Mappa sc. 1:1000 Fg 176 part. 1853

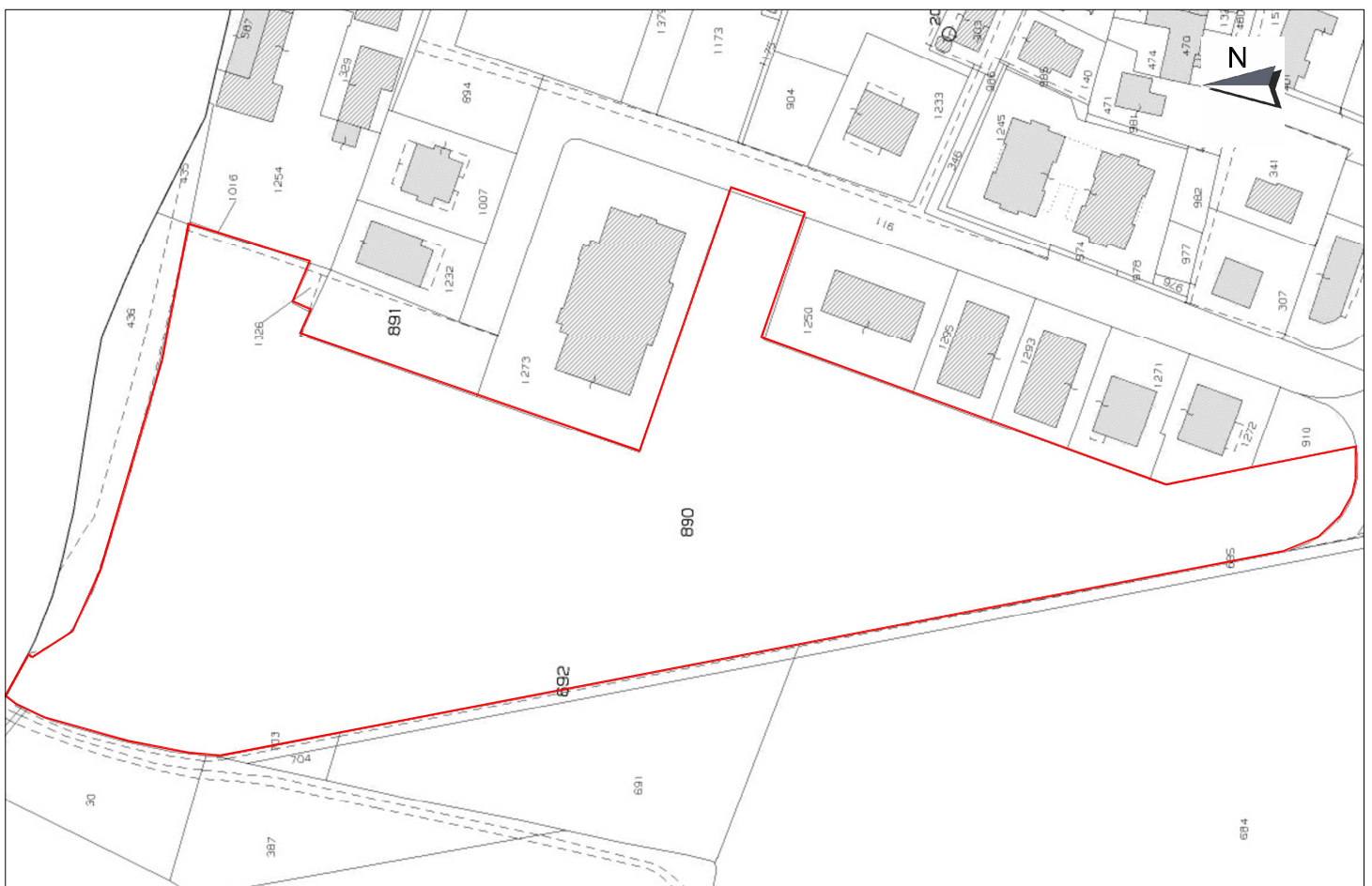
Area 08 - Area verde cavalcavia Montà



- Localizzazione apiario
- ▲ Accessi alle aree
- Aree individuate sul Catasto Terreni

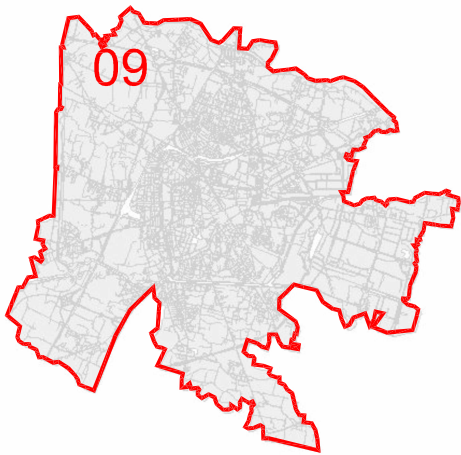





Ortofoto sc. 1:2000

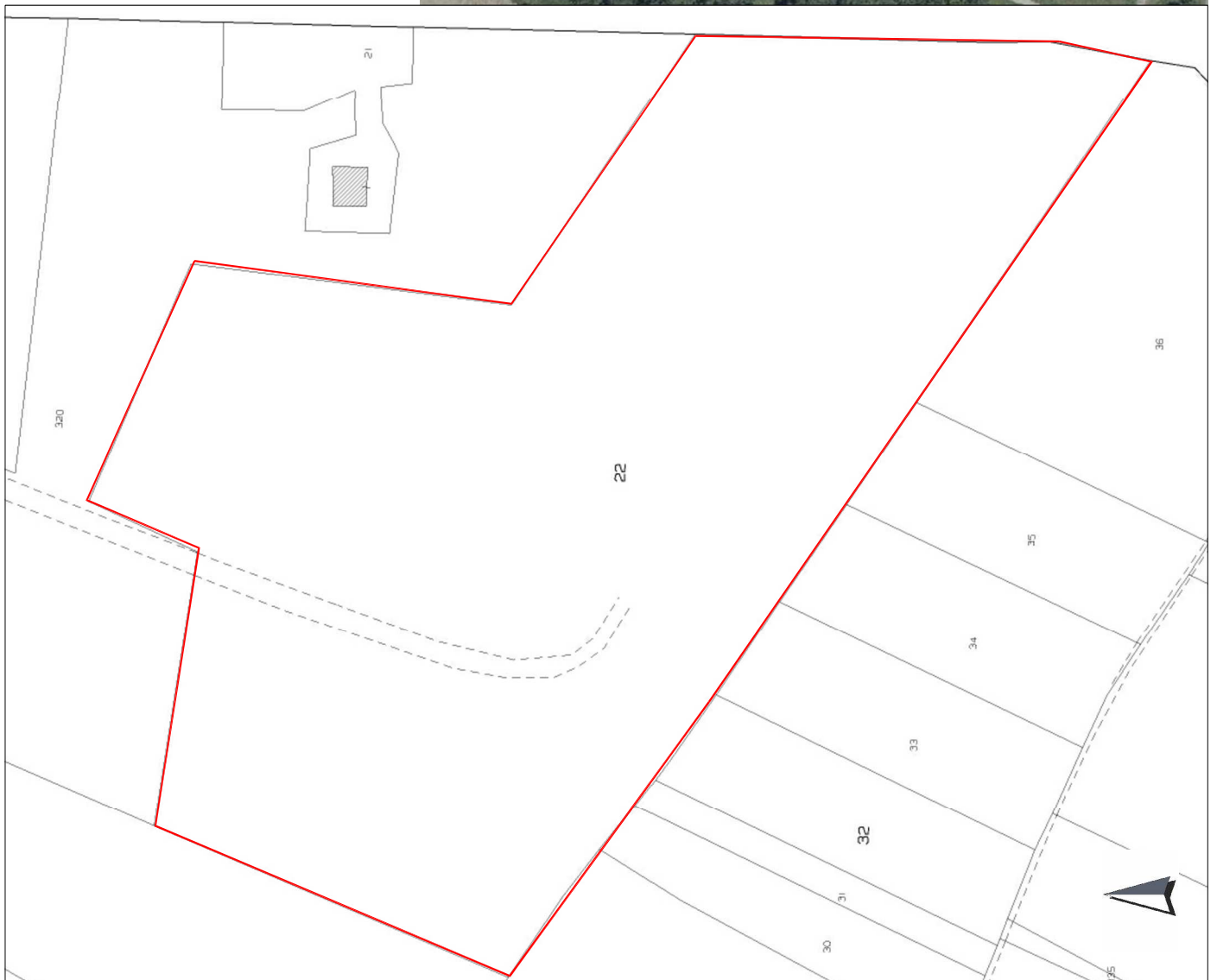


Estratto di Mappa sc. 1:1000 Fg 35 part. 890

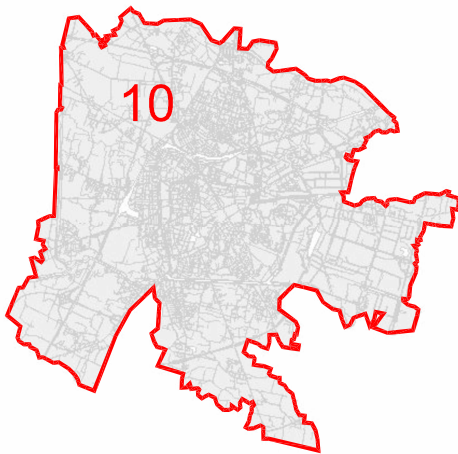
Area 09 - Parco Alpini






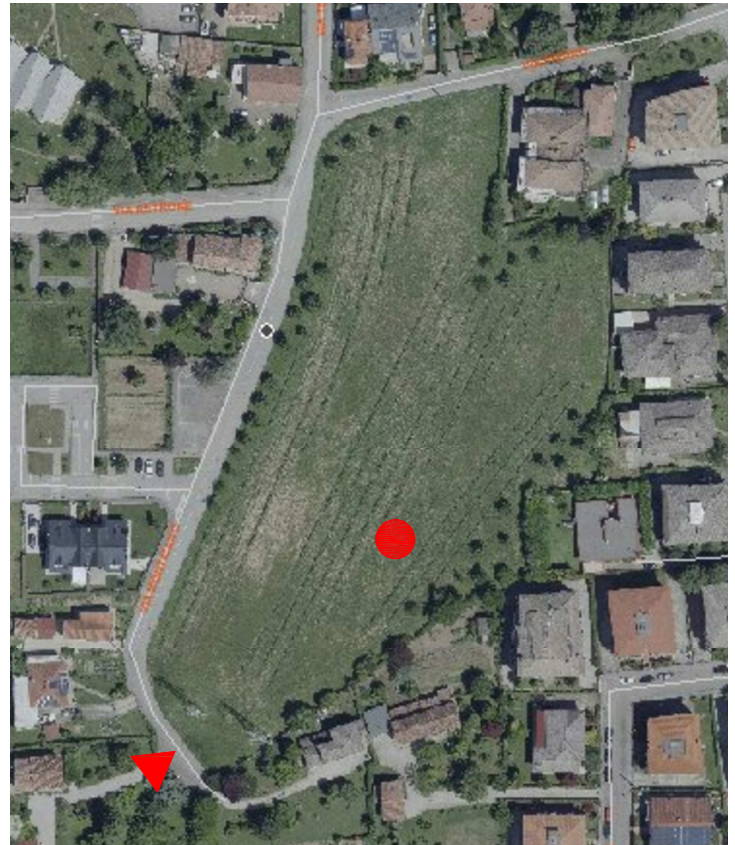
-  Localizzazione apiario
-  Accessi alle aree
-  Aree individuate sul Catasto Terreni



Area 10 - Bosco via Monticano



-  Localizzazione apiario
-  Accessi alle aree
-  Aree individuate sul Catasto Terreni



Ortofoto sc. 1:2000



Estratto di Mappa sc. 1:1000 Fg 21 part. 919