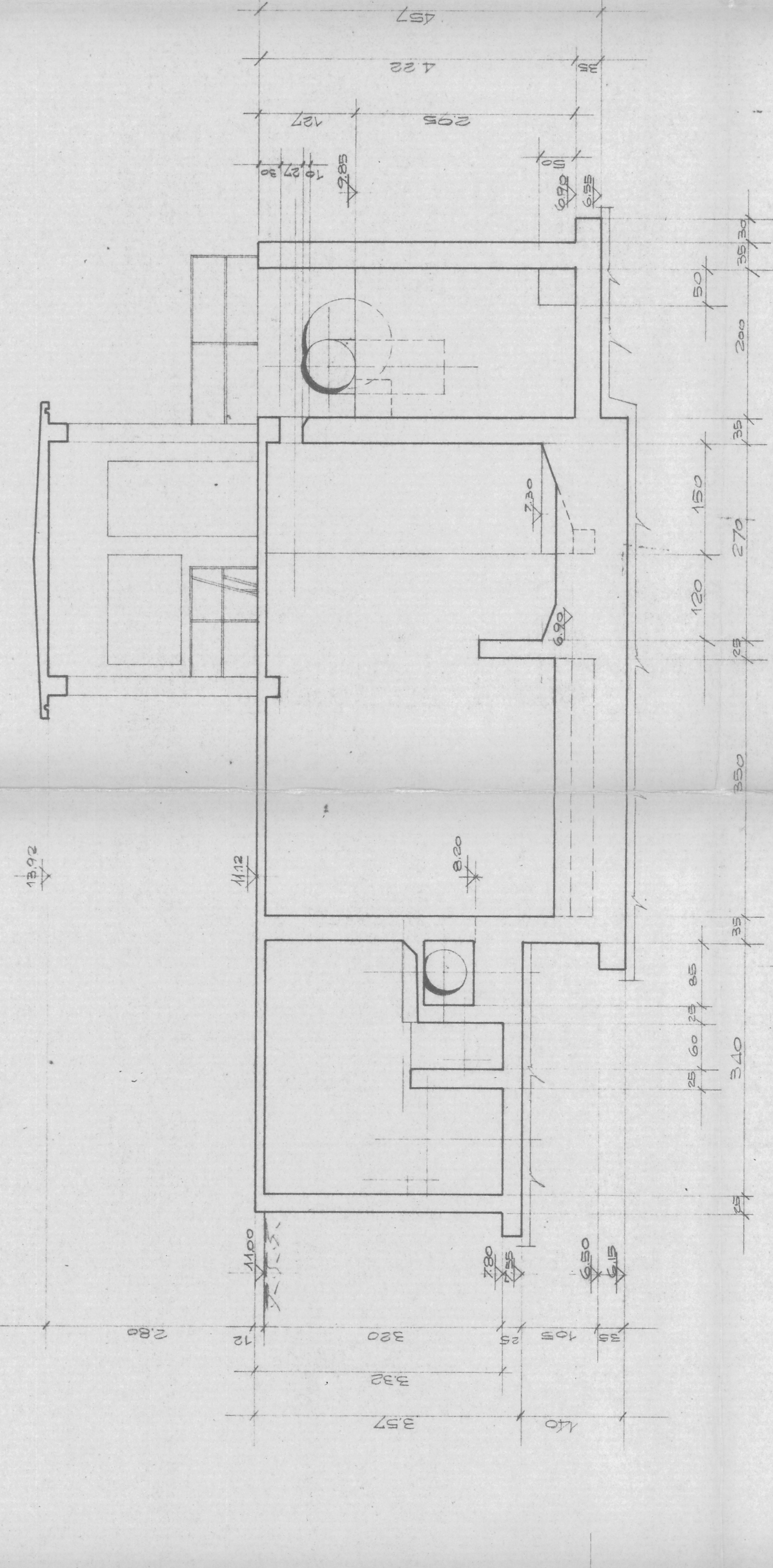
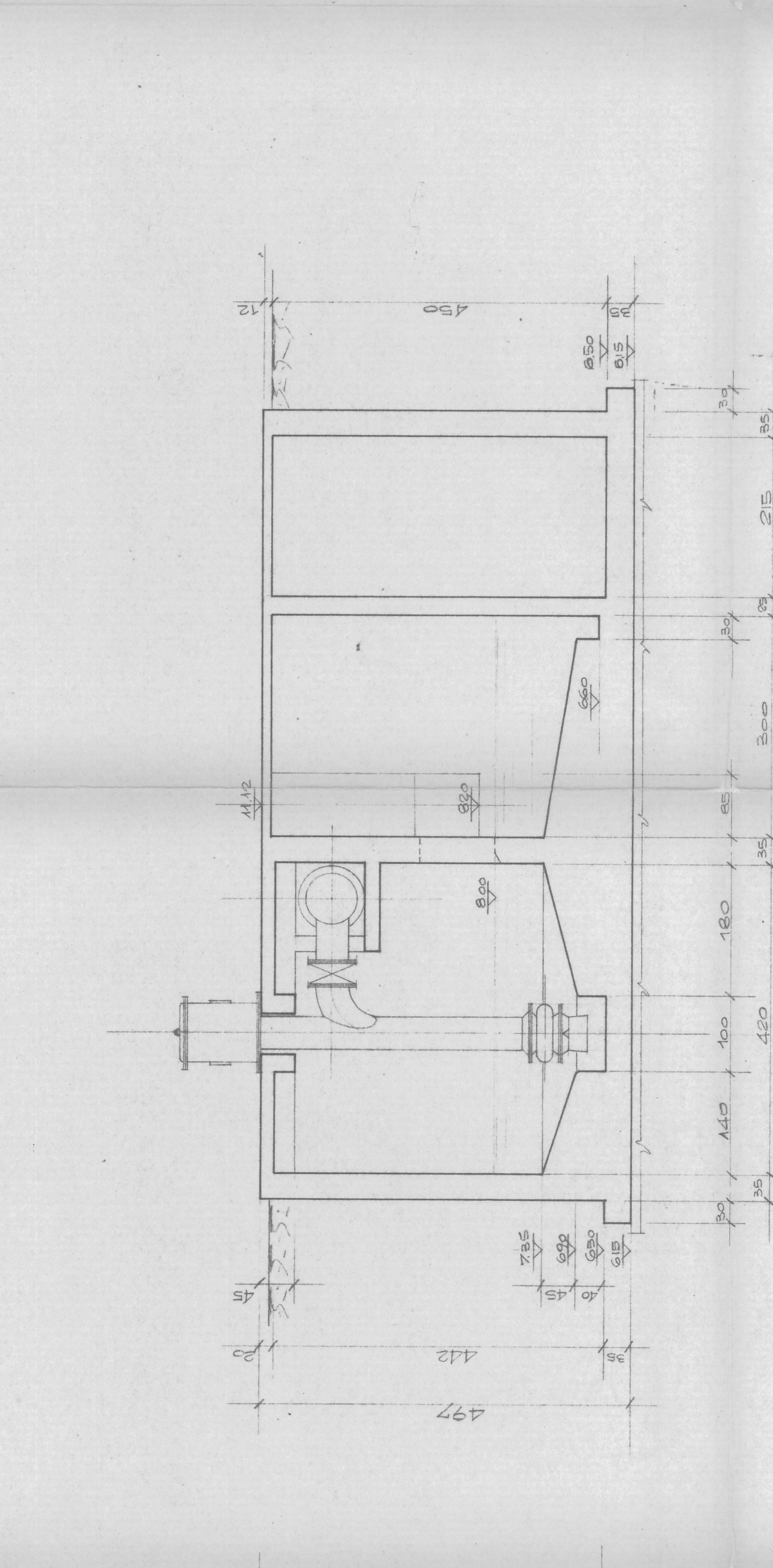


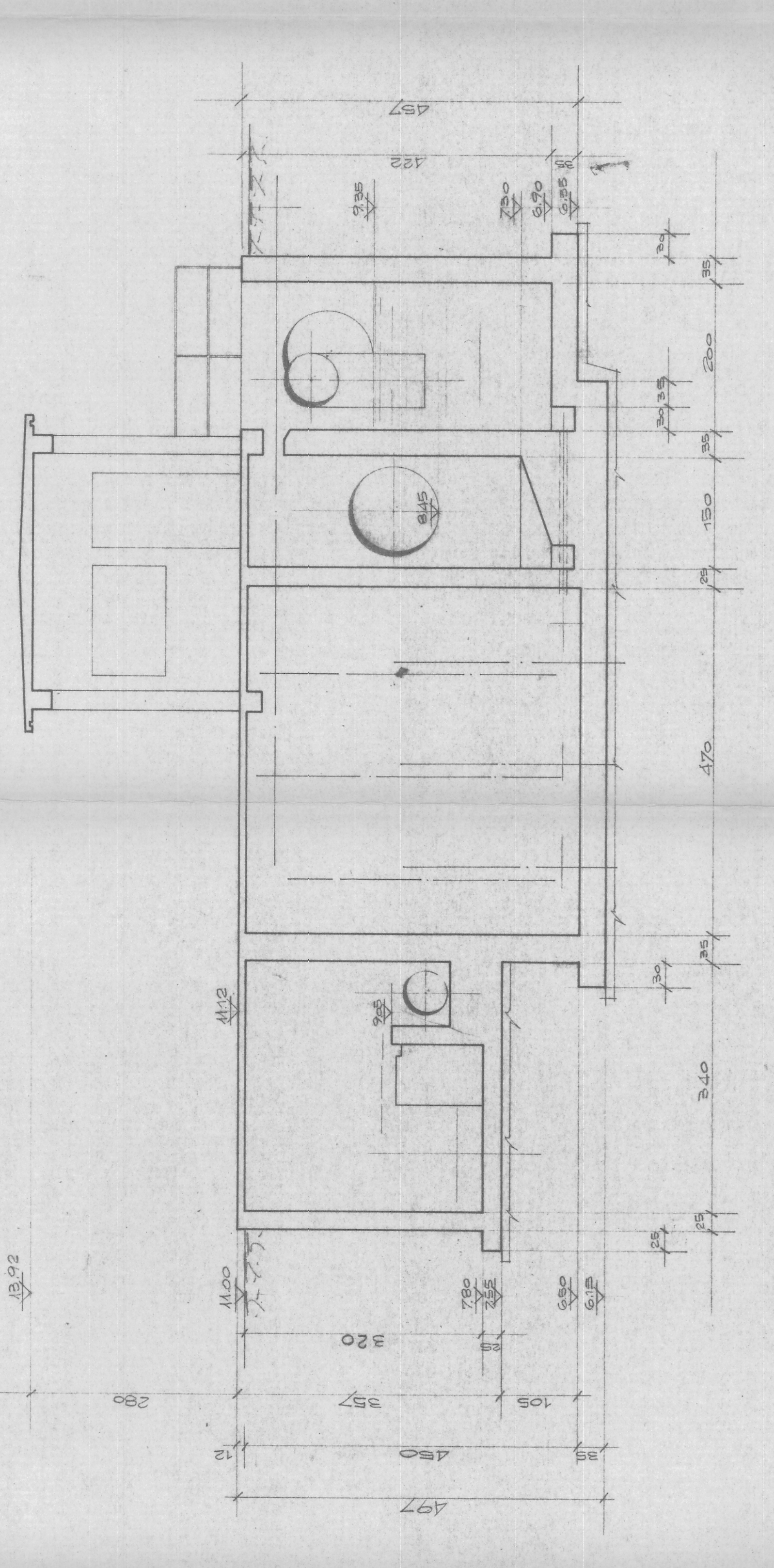
SEZIONE A-A



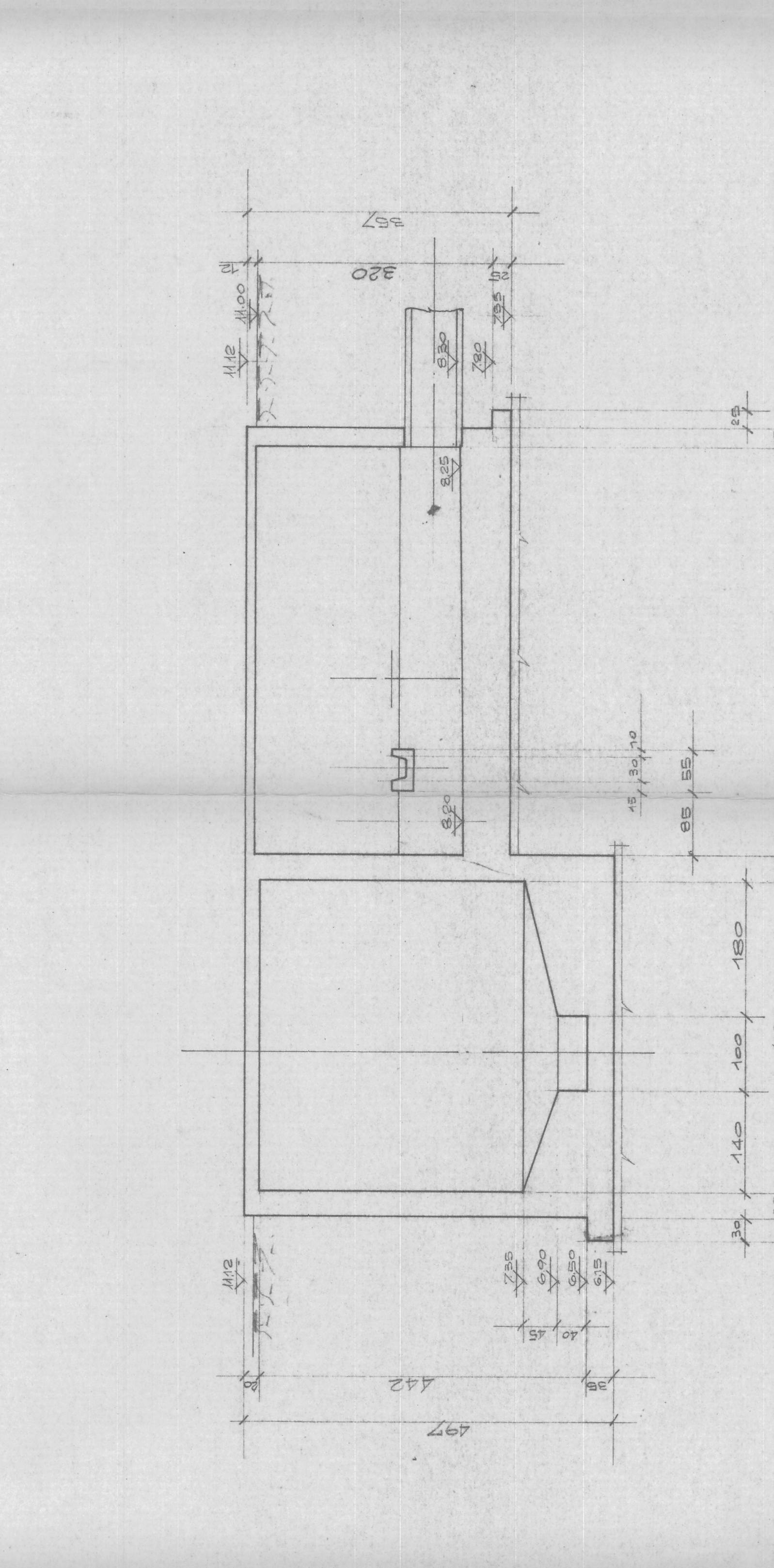
SEZIONE B-B



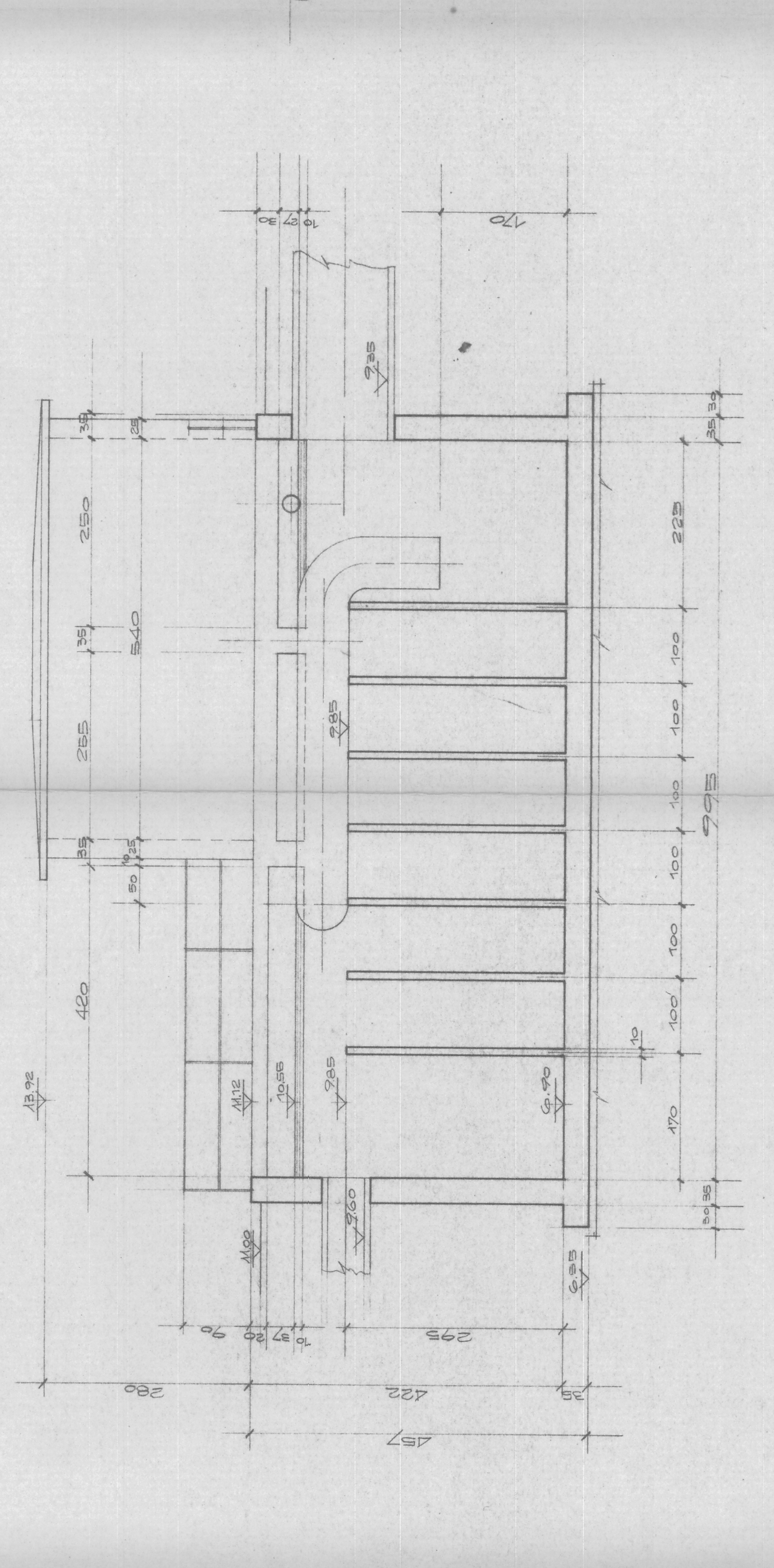
SEZIONE E-E



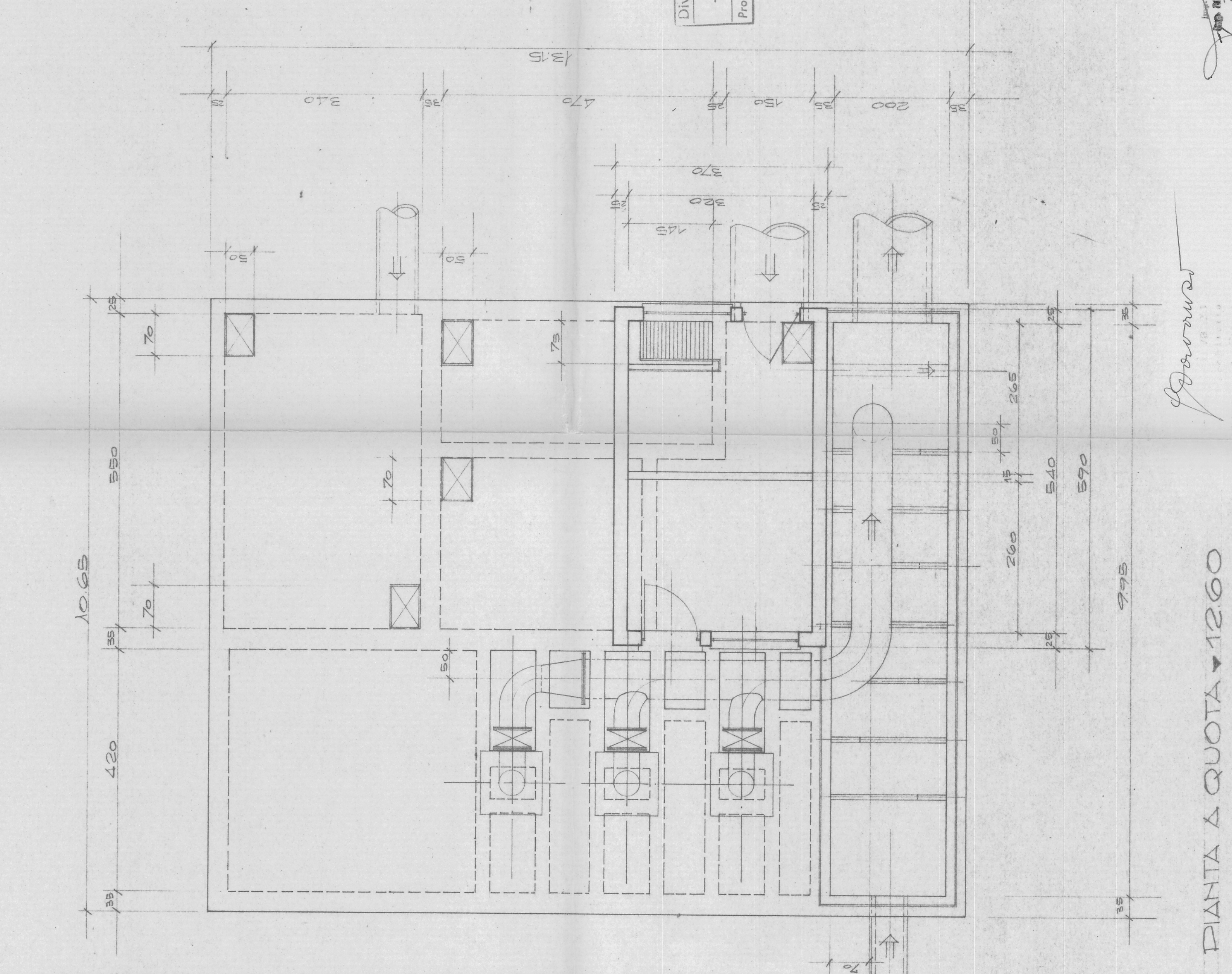
SEZIONE C-C



SEZIONE D-D



SEZIONE F-F



PIANTA A QUOTA +1260

ORIGINALE

Div. III - L. P. P.
C.A.T. S.p.A.
- 9011 1985
Prot. n. 9 803

Garavito

ufficio tecnico impresa ing. pio guaraldo
11134 - 31041 - 31042
CENTRALE DI SOLLEVAMENTO
PARTICOLARI COSTRUTTIVI.
Progetto del "POPO BOAZZO" di Padova in 10.
1:50
cattedra Chiesambona.
2 Agosto 1965